





Scheda tecnica indumento/Garment technical data sheet. 04509.00

Identificazione articolo/Item identification					
Cod. comm.le Industrial Starter/ IS commercial item code:	04509	Cod. art. fornitore/ Supplier item code*:	4509	Cod. fornitore/ Supplier code:	000535
Cod. colore Industrial Starter/ Industrial Starter colour code:	040 (blu/blue)	<input checked="" type="checkbox"/>	Articolo del catalogo/Item from catalogue		
	060 (nero/black)	<input type="checkbox"/>	Articolo personalizzato/Customized item		
	070 (rosso/red)		Codice cliente/Customer code:	N/A	
	080 (grigio/grey)				
Nome articolo/Item name:	Gilet Softshell "SNAPPY" / "SNAPPY" softshell bodywarmer				

Descrizione tecnica dell'articolo/Technical item description			
	Composizione/ Fabric composition	Colore/colour (Pantone)	Peso del tessuto/ Fabric weight [g/m ²]
Tessuto esterno / Outer shell :	94 % poliestere 6% spandex accoppiato con membrana TPU (wp 8.000 mm MVP 1.000 mm) e con micropile 144F / 94 % polyester 6% spandex bonded with TPU membrane ((wp 8.000 mm MVP 1.000 mm) and with 144F fleece	Blu-Nero-Grigio- Rosso / Blue- Black-Grey-Red	310 +/- 5%
Fodera / Lining :	100% poliestere / 100% polyester	Nero / Black	140 +/- 5%
Accessori/Accessories:	n. 3 tasche frontali, n.1 tascone interno, inserti piping alta visibilità / n. 3 outer pockets, n.1 inner pocket, Hi Vi piping inserts		
Loghi e ricami/ Logos & embroideries:	 		
Taglie/Sizes:	040 (blu / blue) & 060 (nero / black) S, M, L, XL, XXL, XXXL, 4XL, 5XL 070 (rosso / red) & 080 (grigio / gery) S, M, L, XL, XXL, XXXL		
Imballo/Packages:	n. 1 pz per polybag – n. 10 pz per cartone / n. 1 piece per polybag- n. 10 pcs per export carton		
Istruzioni lavaggio/ Care label:			
Nota / Notes :	-		



Scheda tecnica indumento/Garment technical data sheet. 04509.00

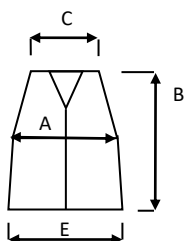
Conformità alle norme CE/Conformity with EC standards

Cat.DPI/ PPE Category:	I	Norme CE e livelli di protezione/ EC standards and protection levels:	EN ISO 13688:2013 (Rif. Test Report RdP no: 18RT02842 by RITEX *)*Accredia Lab n. 0315 L
Lingue nota Informativa/ Manufacturer's notes languages:	IT,ES,CZ,PL,EN,PT,SK,HU,FR,DE,LT,RS,GR,SI,LV,HR,EE,TR,RO		

Misure delle taglie/Size measurements [cm]

	XS	S	M	L	XL	XXL	XXXL	4XL	5XL
A. Torace / Chest:	98	104	110	116	122	128	134	140	146
B. Lunghezza tot. / Tot. lenght:	64	66	68	70	72	74	76	78	80
C. Apertura collo / Neck opening :	49	50	51	52	53	54	55	56	57
E. Fondo / Bottom:	47	50	53	56	59	62	65	68	71

Disegno e foto/Drawing and photo



Vicenza, 10/05/2021

Resp. acquisti/Purchasing manager